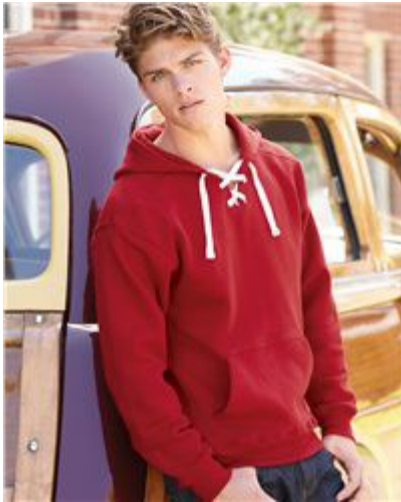
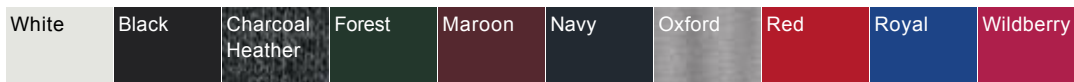


J. America - Sport Lace Hooded Sweatshirt - 8830



Awesome pullover scores a lace-up front, sport shoulder panel and smooth jersey-lined hood.
10.0 oz., 80/20 cotton/polyester
Split front placket with six sewn eyelets
Three piece sport construction hood to allow for decoration
Thick white flat lace drawcord
2x1 rib side gusset and panels
Custom color replaceable laces available (Style 8831) in over a dozen colors

Colors



Finished Measurements

	XXS	XS	S	M	L	XL	2XL	3XL
Body Length	24	26	28	29.5	31	32.5	34	35.5
Body Width	17	19	21	22.5	24	25.5	27	28.5
Sleeve Length	32	33	35	36	37	38	39	40